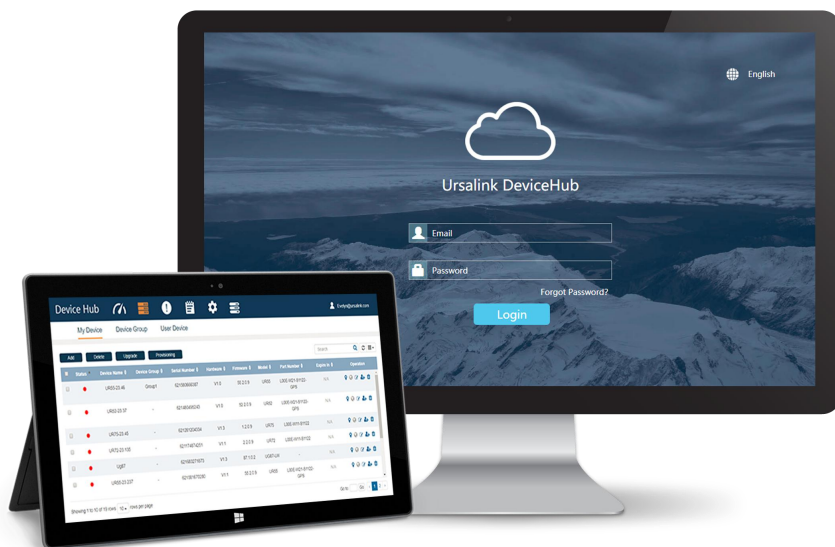


Ursalink DeviceHub

Easy to Deploy, Manage and Monitor Your Network

DeviceHub Installation Guide



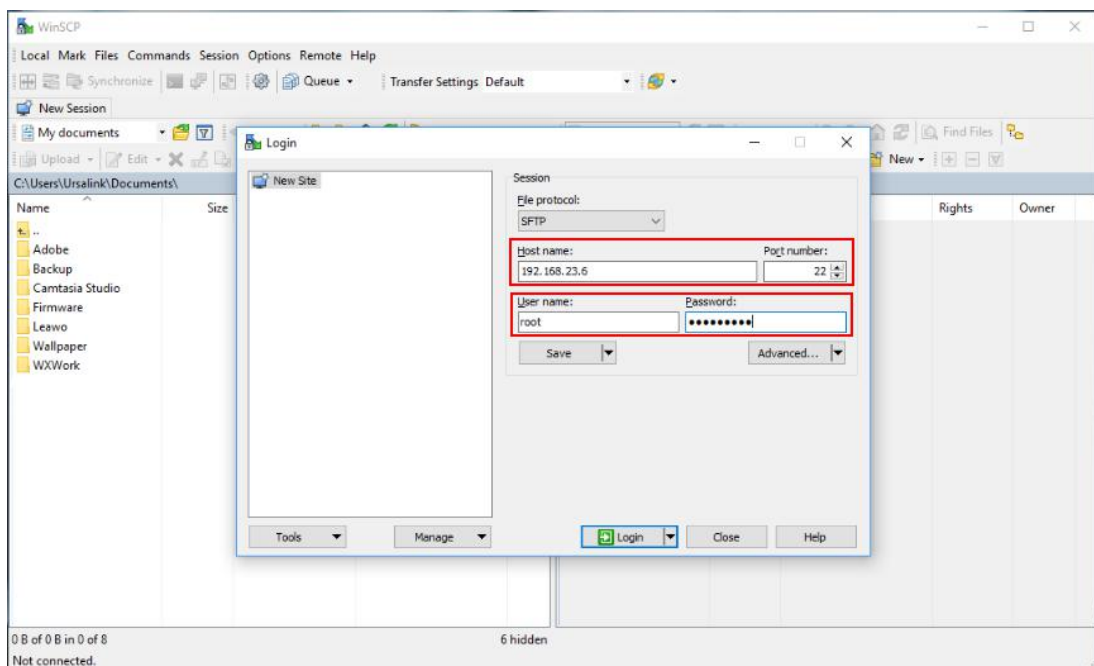
This guide will teach you how to install DeviceHub on Linux. In general, we recommend Ubuntu 16.x server if possible.

Pre-installation Checklist

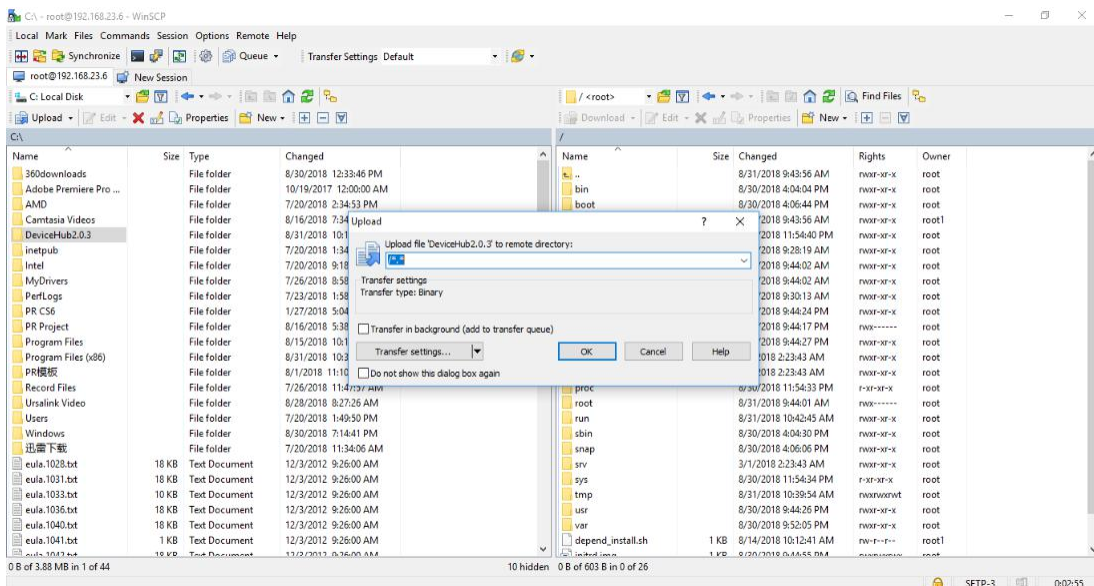
List	Description
Linux Server	Ubuntu version 16.x
Public IP	Use a private IP (192.168.23.6) as an example in this document
Installation Package	DeviceHub2.0.3.zip
WinSCP	Upload Installation Package
Putty	Remote access

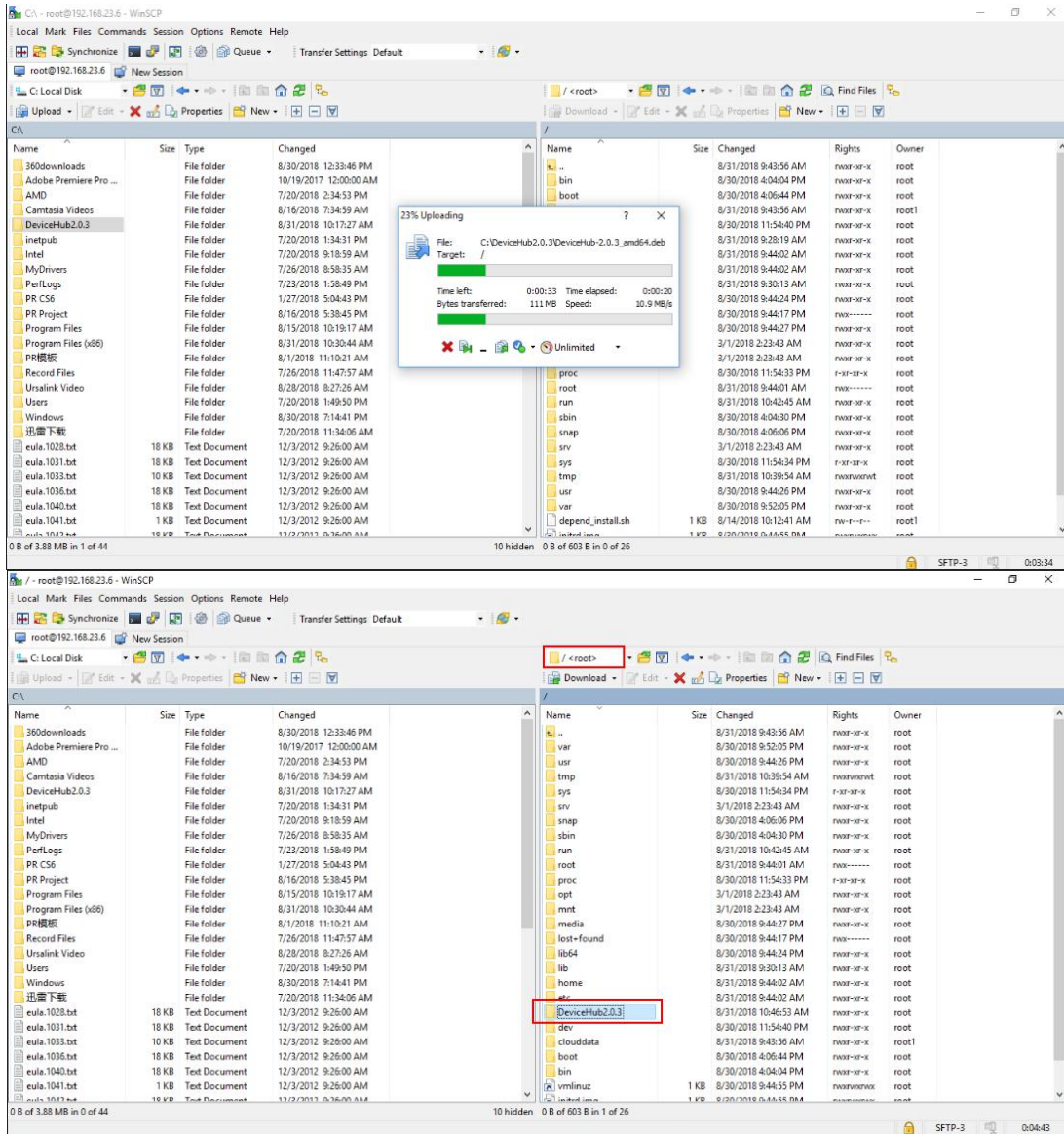
Unzip Installation Package & Upload

Connecting to Linux Server via WinSCP



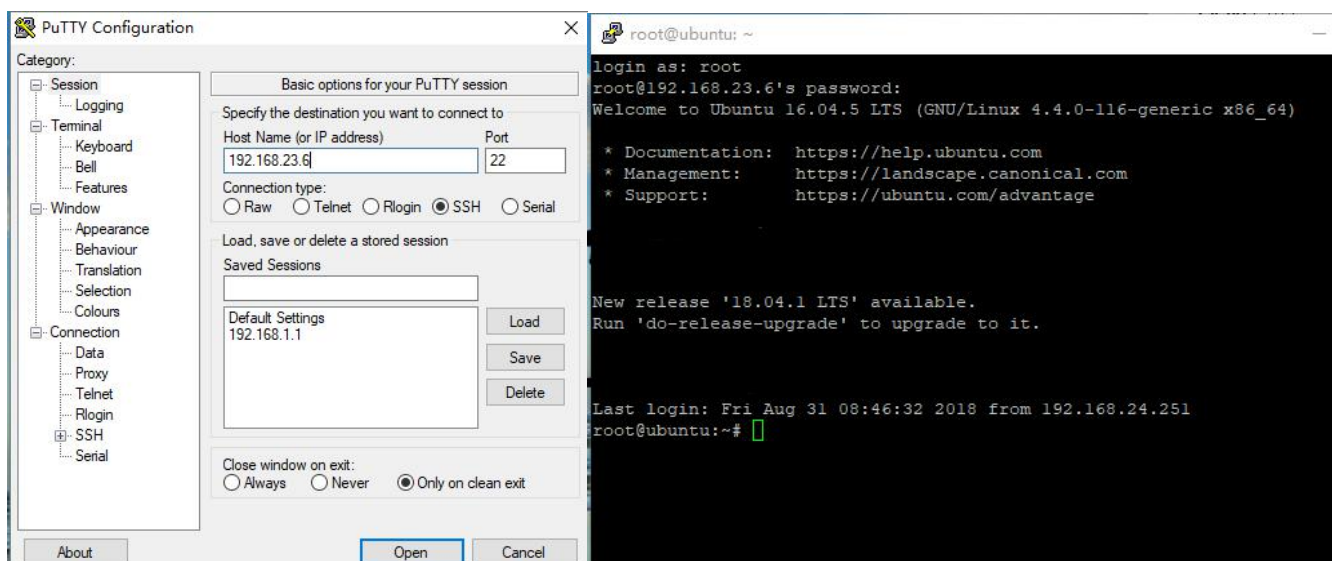
Upload Package to Server





Install DeviceHub

Connecting to Sever via Putty



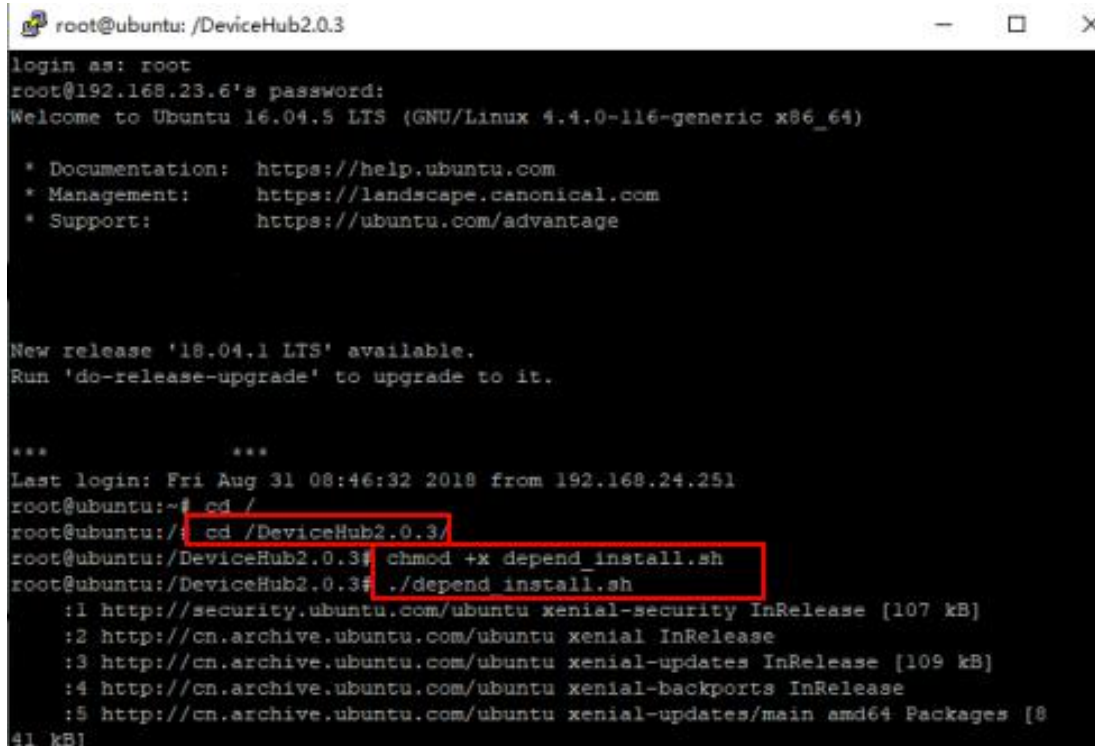
Cd to DeviceHub2.0.3

```
#cd DeviceHub2.0.3
```

Execute the shell commands

```
#chmod +x depend_install.sh
```

```
#!/depend_install.sh
```



```
root@ubuntu: /DeviceHub2.0.3
login as: root
root@192.168.23.6's password:
Welcome to Ubuntu 16.04.5 LTS (GNU/Linux 4.4.0-116-generic x86_64)

 * Documentation:  https://help.ubuntu.com
 * Management:    https://landscape.canonical.com
 * Support:       https://ubuntu.com/advantage

New release '18.04.1 LTS' available.
Run 'do-release-upgrade' to upgrade to it.

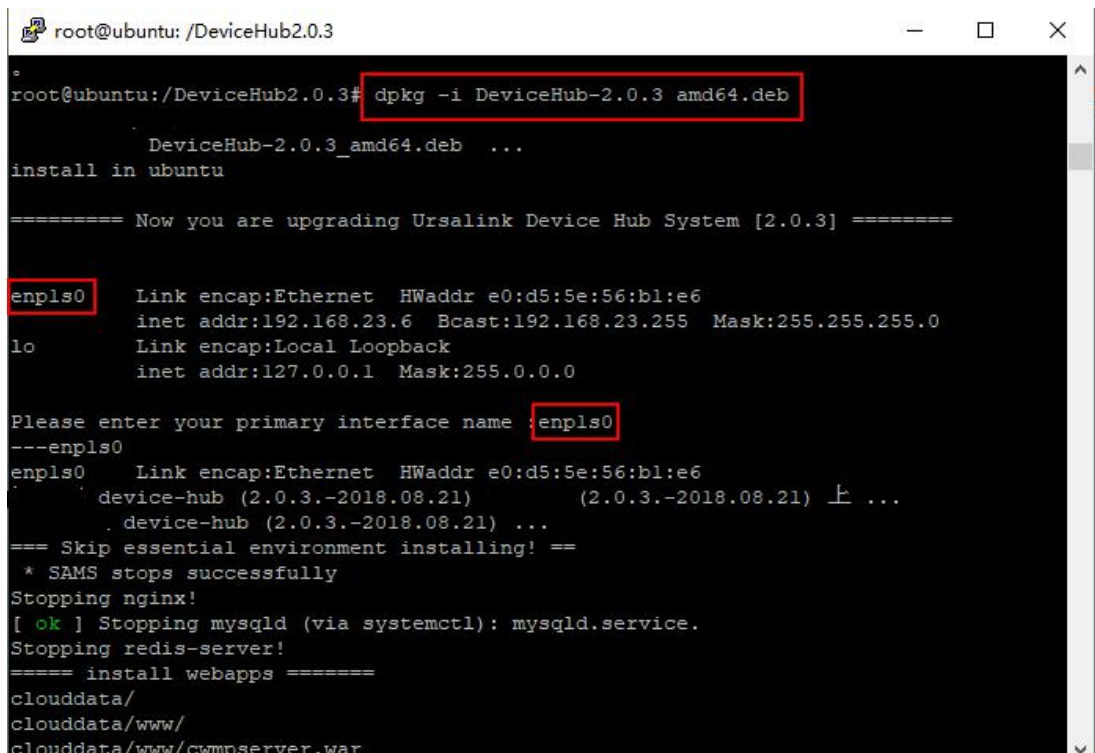
***

Last login: Fri Aug 31 08:46:32 2018 from 192.168.24.251
root@ubuntu:~# cd /
root@ubuntu:~/# cd /DeviceHub2.0.3/
root@ubuntu:/DeviceHub2.0.3# chmod +x depend_install.sh
root@ubuntu:/DeviceHub2.0.3# ./depend_install.sh
:1 http://security.ubuntu.com/ubuntu xenial-security InRelease [107 kB]
:2 http://cn.archive.ubuntu.com/ubuntu xenial InRelease
:3 http://cn.archive.ubuntu.com/ubuntu xenial-updates InRelease [109 kB]
:4 http://cn.archive.ubuntu.com/ubuntu xenial-backports InRelease
:5 http://cn.archive.ubuntu.com/ubuntu xenial-updates/main amd64 Packages [
41 kB]
```

Install DEB File

```
#dpkg -i DeviceHub-2.0.3_amd64.deb
```

When the primary interface name is queried, enter interface name.



```
root@ubuntu: /DeviceHub2.0.3
root@ubuntu:/DeviceHub2.0.3# dpkg -i DeviceHub-2.0.3_amd64.deb
DeviceHub-2.0.3_amd64.deb ...
install in ubuntu

===== Now you are upgrading Ursalink Device Hub System [2.0.3] =====

enp1s0  Link encap:Ethernet  HWaddr e0:d5:5e:56:b1:e6
        inet addr:192.168.23.6  Bcast:192.168.23.255  Mask:255.255.255.0
lo      Link encap:Local Loopback
        inet addr:127.0.0.1  Mask:255.0.0.0

Please enter your primary interface name : enp1s0
---enp1s0
enp1s0  Link encap:Ethernet  HWaddr e0:d5:5e:56:b1:e6
        device-hub (2.0.3.-2018.08.21)  (2.0.3.-2018.08.21) 上 ...
        device-hub (2.0.3.-2018.08.21)  ...
=== Skip essential environment installing! ==
 * SAMS stops successfully
Stopping nginx!
[ ok ] Stopping mysqld (via systemctl): mysqld.service.
Stopping redis-server!
===== install webapps =====
clouddata/
clouddata/www/
clouddata/www/cwmpserver.war
```

It might take about 30 minutes before installation complete.

```
root@ubuntu: /DeviceHub2.0.3
root, 0902cd757d,
1.0.0
2.0.0
[2018-08-31 11:31:41]: sqlfunc.c:156: __mysql_conn: Failed to connect to mysql database on localhost: (1045) Access denied for user 'root'@'localhost' (using password: YES)
mysql connect failed !
stund already running...
[ ok ] Stopping mysqld (via systemctl): mysqld.service.
mysqld: no process found
[ ok ] Starting mysqld (via systemctl): mysqld.service.
Stopping redis-server! /usr/local/bin/redis-server: no process found
Starting redis-server!
Gracefully shutting down php-fpm . done
Starting php-fpm done
Starting nginx!
* SAMS has already been stopped or has problems
* Please contact Tomas
Using CATALINA_BASE:   /clouddata/server/tomcat7
Using CATALINA_HOME:   /clouddata/server/tomcat7
Using CATALINA_TMPDIR: /clouddata/server/tomcat7/temp
Using JRE_HOME:        /clouddata/server/java/jre
Using CLASSPATH:       /clouddata/server/tomcat7/bin/bootstrap.jar:/clouddata/server/tomcat7/bin/tomcat-juli.jar
Tomcat started.
----- Installation of DeviceHub [2.0.3] is complete! -----
root@ubuntu: /DeviceHub2.0.3#
```

Login DeviceHub

Fill in the information and click “Install”

- **SMTP Server Address:** set the SMTP server address for email service.
- **SMTP Server Port:** set the SMTP server port for email service.
- **Email From:** set an available email account to implement email service such as alarm email.
- **Password:** fill in the password of the email account.
- **Administrator Account (Email):** set an email address as the administrator account.
- **Account Password:** set the password of the administrator account.

Note: Remember to enable SMTP services for your Email.

Device Hub

Install Wizard

Fill in the setup information:

SMTP Sever Address:

SMTP Server Port:

Email From:

Password:

Administrator Account (Email):

Account Password:

Install

Login with your Administrator Account

